

## Rooflights and AOVs

Flat roof solutions





Bauder is a leading European manufacturer of flat roof waterproofing membranes and insulation to make buildings watertight and thermally efficient; photovoltaic systems for renewable energy generation; green roofs to support the environment and create living and working spaces for people; and blue roofs to attenuate stormwater.

Customers choose us because of the way we do business, our robust advice on the right solutions, and our approach to delivering projects. We collaborate with clients to deliver the optimal solution for a building from our broad portfolio of systems.



# Rooflights

## Glazing to complement our flat roofs

Bauder can provide a solution for rooftop glazing requirements on all flat-roofed buildings, ranging from standard modular units to specialist structural glazing.

All our roof glazing products are manufactured to comply with current building regulations and health & safety requirements, and are fully compatible with our roof waterproofing systems to provide a unified guarantee.

### Completing the roof package

Rooflights can form part of an effective technical lighting scheme, particularly in conjunction with controlled artificial lighting, to produce specified illumination levels.

Horizontal rooflights provide two and a half times more light than vertical windows.

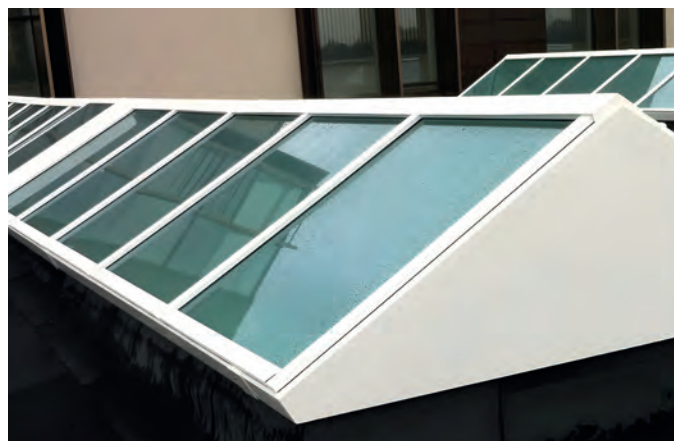
### Our rooflight service

Experienced Bauder technical staff are able to advise and guide you every step of the way. From the initial measuring up to the completed installation, you are assured of the best technical support and advice. If you have a particular requirement for bespoke rooflights or structural glazing, we can provide you with a design service to match your project needs.

All Bauder rooflights are designed to allow effective waterproofing detail at the junction.

### Plus points

- Extensive range of products and styles to suit wide range of applications
- Installed as part of the overall roofing package
- Installed with up to 25 years' guarantee



# Glazing Solutions

## Satisfying your glazing requirements, from standard modular units to specialist structural units

All our roof glazing products are manufactured to comply with current building regulations and health and safety requirements and are fully compatible with our flat roof waterproofing systems.

Our rooflights are installed with up to 25 years' guarantee to give total confidence and peace of mind.

### Bauder standard modular rooflights

Provide illumination, insulation and ventilation to the interior of flat-roofed buildings. These comprise either polycarbonate or glass glazing on integral uPVC upstands.

- Bauder Euroglaze: Made-to-measure polycarbonate rooflights with enhanced security features
- BauderDOME: Standard range of polycarbonate rooflights
- BauderFLATGLASS: Standard range of glass rooflights with a flat glazing finish

### Special modular rooflights

Any modular rooflight design that falls outside our standard range, such as circular glazing with metal upstands.

### Walk-on rooflights

Support foot traffic on roof terraces and gardens, and ground floor areas over basement rooms, whilst providing natural daylight to the spaces below.

### Continuous rooflights

Triple-glazed UV-protected polycarbonate with vented airspaces. Available in widths up to 2.4 m.

### Modular link glazing

Custom-built, aluminium-framed panel glazing system bespoke for each project.

### Structural rooflights

Bespoke structural glazing installations allow designers considerable freedom when incorporating natural daylight to a roofing project. These can take various and bespoke shapes and forms.

### Automatic Opening Vents (AOV)

Smoke vents that improve the conditions inside a building in the event of a fire by allowing hot air and smoke out, and cool air to flow in. These are to be integrated into the building fire safety system.





# Bauder Euroglaze

## Made-to-measure polycarbonate modular rooflights

A bespoke design to provide high standards of illumination, insulation and ventilation to the interior of flat-roofed buildings.

The Bauder Euroglaze rooflight range represents the next generation of rooflight design. A suite of interchangeable uPVC extrusions to ensure both splayed and vertical kerbs are available to suit a precise height, enabling the kerb to be fixed directly to the roof regardless of the thickness of insulation used.

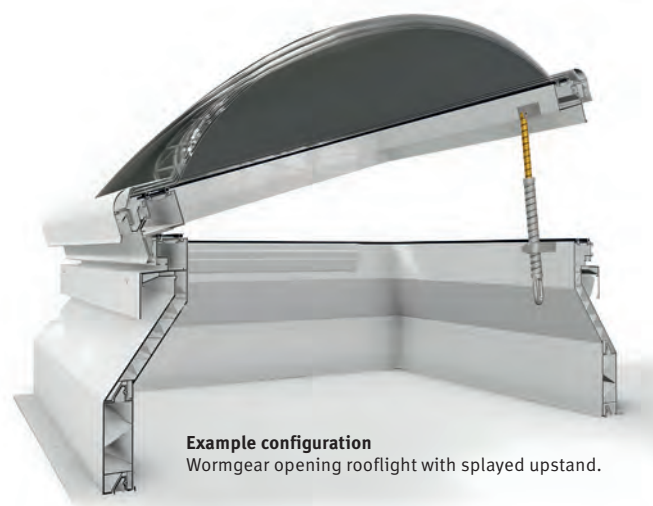
A metal security frame conceals the glazing fixings to provide an additional security feature whilst enhancing the rooflight aesthetics.

The Euroglaze rooflight is made-to-order, so the size can be made to fit any roof aperture. A variety of ventilation and glazing options are available to meet the demands of any project. An access hatch option is also available to provide pedestrian access to the roof for maintenance purposes.

Each project is measured and the rooflights are fitted to suit the aperture size with dimensions between 600 x 600 mm up to 2,500 x 1,300 mm.

### Plus points

- Can be made to fit any roof opening size
- The triple skinned polycarbonate, dome or pyramid profiled glazing can be supplied either clear or with a diffused inner skin
- Supplied with an integral uPVC upstand in brilliant white, the upstand profile is dependent on the particular application and rooflight specification
- Features a brilliant white metal security frame to conceal all glazing fixings
- Access hatches are available for applications where both daylight and access to the roof is required
- Its integral kerb and triple skin polycarbonate glazing achieves Ud-values as low as 1.6 W/m<sup>2</sup>K
- When specified within Bauder waterproofing systems as an integrated component, these products are included within our system guarantee



# Bauder Euroglaze *continued*

## Made-to-measure polycarbonate modular rooflights

A bespoke design to provide high standards of illumination, insulation and ventilation to the interior of flat-roofed buildings.

### Ventilation Options

Euroglaze is supplied as standard with closeable 'hit and miss' vents in two sides, but additional vents can be provided if required. Rota vents are an available option. Hinged, wormgear opening rooflights, and units with a power fan incorporated into the glazing are also available.

#### Hit and miss vents

Provides minimal background ventilation controlled by a small sliding shutter over slots in the kerb wall that are protected from rain by the external cover flashing.

#### Rota vents

An all-uPVC 'hopper' ventilator directs airflow upward to reduce the risk of condensation forming on the glazing as well as preventing, down draughts. The vent openings are fully protected reducing the risk of moisture, wind-blown debris or grit entering the building.

#### Opening rooflight (manually operated wormgear)

The whole rooflight top hinges open on a continuous co-extruded uPVC hinge to allow large areas of ventilation through the open area.

#### Opening rooflight (electrically operated chain drive motor)

A 230- or 240-volt motor drives the unit open to provide large areas of ventilation through the opening.

### Verified properties

#### BBA Certificate 05/4279

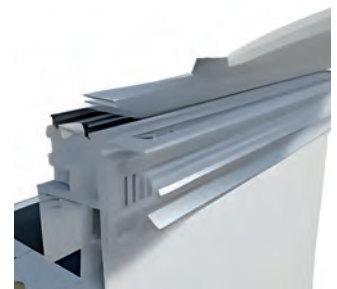
- The polycarbonate sheets used for the glazing achieve Class B-s1, d0 when classified under BS EN 13501-1 and can be regarded as having a B<sub>ROOF</sub>(t4) classification under BS EN 13501-5
- The rigid and solid 3 mm-thick polycarbonate sheet is classified as TP(a) rigid material, in accordance with the national building regulations
- Service life >25 years



Rota vent rooflight



Hit and miss vent



Rota



Opening rooflight  
manually operated wormgear



Opening rooflight  
electrically operated chain drive motor



# BauderDOME

## Standard range of polycarbonate modular rooflights

Provide a simple but effective solution to deliver daylight and ventilation to the interior of flat-roofed buildings.

The wide range of rooflights includes square and rectangular sizes from 600 x 600 mm to 2,500 x 1,300 mm.

The triple-skinned polycarbonate, dome or pyramid profiled glazing can be supplied either clear or with a diffused inner skin.

### Plus points

- The integral upstand of BauderDOME is manufactured in 237 mm-high uPVC with a solid inner and outer wall, to allow successful waterproofing. The profile of the upstand makes it easy to directly apply Bauder waterproofing membranes. Self-adhesive bitumen, single ply, and cold-applied liquid systems are all compatible
- Integral upstand and triple skin glazing achieves a Ud-value of a maximum 1.8/m<sup>2</sup>K
- Can be supplied unvented or with closeable 'hit and miss' vents incorporated in two sides where required. Hinged, wormgear opening rooflights, and units with a power fan incorporated into the glazing are also available
- Access hatches are available for applications where both daylight and access to the roof are required

### Fire properties

- The polycarbonate sheets used for the glazing achieve Class B-s1, d0 when classified under BS EN 13501-1 and can be regarded as having a BROOF(t4) classification under BS EN 13501-5
- The rigid and solid 3 mm-thick polycarbonate sheet is classified as TP(a) rigid material, in accordance with the national building regulations





# BauderFLATGLASS

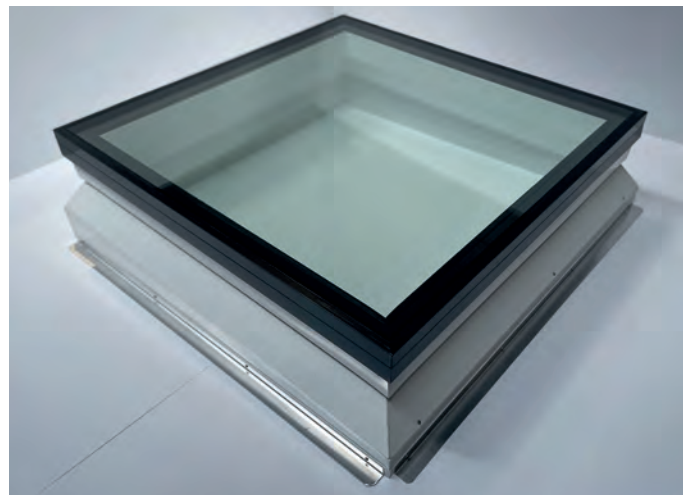
## Double-glazed glass rooflights

A standard range of glass rooflights, offering a thermally efficient solution for supplying daylight and ventilation to the interior of flat-roofed buildings.

BauderFLATGLASS rooflights are available in square or rectangular formats to suit roof opening sizes ranging from 600 x 600 mm to 2000 x 1000 mm and are supplied complete with a choice of either splayed or vertical upstands.

### Plus points

- Double-glazed clear glass-sealed units are set into a powder-coated aluminium frame. The toughened outer skin and low E laminated inner skin provide a class 2 CWCT fragility rating (non-fragile)
- Brilliant white uPVC upstands are available in either a vertical profile to provide maximum daylight area, or a splayed profile. Both variants are supplied with the unique feature of a 5° built-in taper across the width to ensure that rainwater drains effectively from the surface of the glazing. This reduces staining on the glass and should lengthen the time required between cleaning intervals
- Upstands are fitted with two closeable trickle ventilators per rooflight as standard, but hinged motorised chain-opening glazing is also available for applications where a higher level of controlled ventilation is required





# Bauder Special Modular Rooflights

## Designs made to order

Bauder can satisfy any special modular rooflight requirements that may arise, such as circular, bespoke glazing, thermally broken metal upstands and special colours.

In situations where Bauder Euroglaze, BauderDOME or BauderFLATGLASS are unsuitable, a bespoke design can better meet the demands of the project.

### Circular rooflights

Circular units with thermally broken metal upstands and triple-skinned polycarbonate dome-shaped glazing are available up to 1,800 mm in diameter. These are especially useful as replacements for existing glazing on roof refurbishment projects with circular apertures.

### Metal Upstands

Thermally broken metal upstands can be supplied as part of the rooflight assembly in square, rectangular or circular form, powder-coated in a RAL colour of your choice.

### Glass rooflights

Bespoke size double-glazed glass glazing can be supplied in situations where the BauderFLATGLASS standard range is not suitable. The specification can be designed according to clients' specific requirements.



# Continuous Rooflights

## Maximising daylight

Continuous rooflights provide an excellent source of natural daylight for any new build or refurbishment project. Bauder continuous rooflights are triple-glazed polycarbonate as standard and are available in a width of up to 2.4 m with no restriction on length.

### Plus points

- The range for fast-track procurement is available in three formats: barrel vaults, linked pyramids, and linked domes
- Made of enhanced UV-protected polycarbonate with vented airspaces, in accordance with the national building regulations
- The cascade water management system ensures that any moisture is drained to the outside of the structure and that air leakage satisfies building regulation requirements

### Verified properties

#### BBA Certificate 05/4279 (Barrel vault format only):

- Fire classification BROOF(t4) to BS EN 13501-1 with the glazing tested to European Class B-s1, d0 classification
- The 3 mm-thick polycarbonate sheet used for the glazing is classified as TP(a) rigid material, according to the building regulations
- Thermal properties according to BS EN 1873: For a standard 3.0 m x 1.2 m roof opening, the triple-skin polycarbonate glazing achieved U-values between 1.6 W/m<sup>2</sup>K and 1.9 W/m<sup>2</sup>K





# Modular Link Glazing

## Versatile and efficient

The Bauder Modular Link Glazing system is a panel glazing system suitable for both new build and refurbishment projects. The custom-built, aluminium-framed polycarbonate-glazed panels are designed and built for each individual building.

The Modular Link Glazing system is suitable for spans of:

- Up to 2.8 m slope length (unsupported)
- Up to 6 m (with a mid-support)
- Unlimited length, consisting of 0.6- to 1.0 m-wide modules (depending on the solution)

The prefabricated interlocking system is lightweight, cost effective and quick to install when compared to traditional glass systems.

### Plus points

- Lightweight (compared to traditional glass systems)
- Offers resistance to impact
- Thermally efficient
- Panels are fully assembled in the factory
- Available in clear or opal glazing finish
- Available with up to 25 years' guarantee

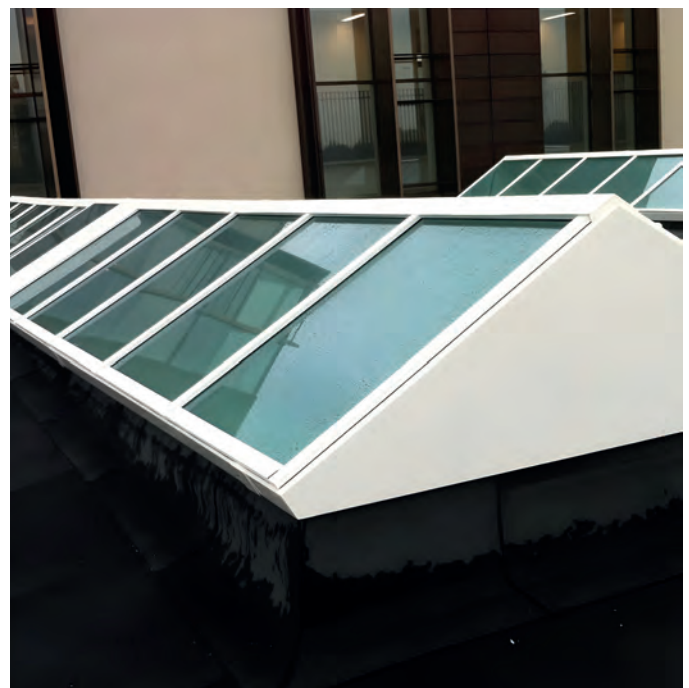
Bauder Modular Link Glazing can be installed at a minimum 10° pitch and used for northlights, patent glazing replacement, monopitch rooflights and on ridges and gutters. This versatility presents designers with new options to introduce natural light into building projects.

### Glazing options

16 mm or 25 mm five wall UV-protected X-structured polycarbonate glazing is available in clear or opal, and provides U-values of 1.9 W/m<sup>2</sup>K and 1.6 W/m<sup>2</sup>K respectively.

### Ventilation options

The panels can incorporate a comfort vent up to a maximum of 1.0 m x 1.4 m using an electric chain actuator.



# Walk-On Rooflights

## Solution for foot traffic

The Bauder Walk-On rooflight allows and supports foot traffic on roof terraces and gardens, as well as ground floor areas over basement rooms, whilst providing natural daylight to the rooms below.

The outer glazing surface of the rooflight sits level and flush with adjacent landscaping, such as decking or paving slabs, adding to the aesthetics and eliminating trip hazards. Bauder Walk-On rooflights are custom-designed, detailed and manufactured for each individual application. Every rooflight is delivered fully assembled and ready for installation onto a prepared builder's kerb.

The standard double-glazed glass units in Bauder Walk-On rooflights feature a 30 mm clear toughened laminated outer pane, a 16 mm airspace, and a 9.5 mm clear toughened laminated low-emissivity pane. The load capacity of the glazing can be tailored to the client's specific requirements.

### Available glazing options:

- ❑ Heavy-duty units
- ❑ Rectangular, square or round shapes set to minimal fall to prevent water ponding
- ❑ Etched glass to offer increased slip resistance in wet conditions

### Plus points

- ❑ The glazing frame is fabricated from heavy duty, thermally broken aluminium, with white powder-coated finish. Other colours are available on request
- ❑ Specially made to order and can be supplied as individual panes with minimum 600 x 600 mm and maximum 2,000 x 1,000 mm dimensions or constructed using multiple panes with internal supporting members. Multiple panes will be maximum 2,000 mm wide and require supporting at 1,000 mm centres all the way along the length
- ❑ Suits domestic applications to floor loadings of 1.5 kN/m<sup>2</sup> Universal Distributed Load and a 2 kN concentrated load as standard. Higher load bearing units can be supplied where necessary





# Structural Rooflights

## Design enhancement for projects

Bespoke structural glazing installations allow designers and architects creative control when incorporating natural daylight to a roofing project.

Our range of structural glazing solutions offers an extensive choice of high quality material including polycarbonate, glass and the latest Nanogel® technology.

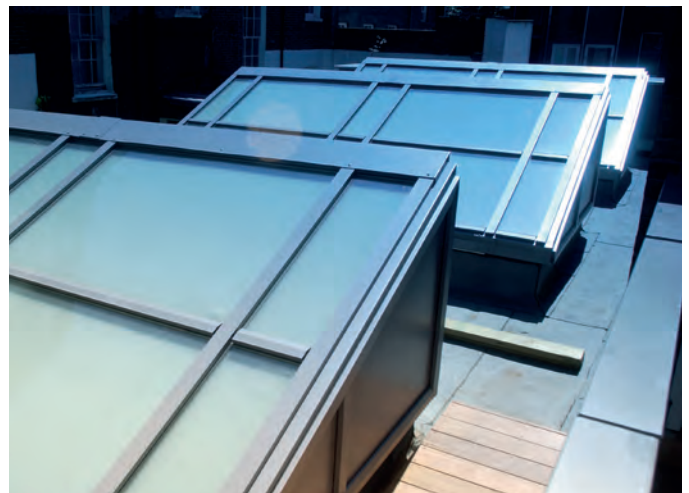
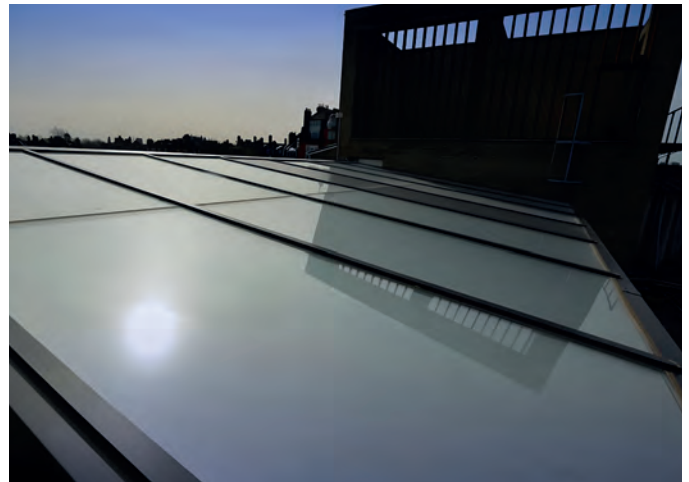
### Plus points

#### Incorporated in all our offerings:

- ❑ Cascade water management system
- ❑ Custom engineered connections
- ❑ Bespoke closing functionality
- ❑ Custom flashings
- ❑ Extensive warranty

The following Bauder structural rooflights can be utilised to fulfil the requirements of a roof refurbishment or enhance the design of a new build project:

- ❑ Mono-pitched
- ❑ Pitched polygon
- ❑ Self-supporting pyramid
- ❑ Ridge light
- ❑ Hipped-end
- ❑ Low-profiled barrel vault



# Automatic Opening Vents

## Fire safety assistance system

Automatic Opening Vents (AOVs) improve the conditions inside a building in the event of a fire by allowing hot air and smoke out, and allowing cool air to flow in.

### When to specify

This system is particularly effective in protecting occupants attempting to evacuate or awaiting rescue, as well as reducing risk for firefighters.

AOVs form part of a building's fire protection system and will require the services of a specialist M&E contractor for correct operation. It is important to remember that an AOV is not an access hatch. It is a dedicated opening for the removal of smoke from a building.

AOV's are particularly recommended in areas with low or no other ventilation outlets and high traffic routes such as single stair apartment blocks, vertical smoke shafts, common escape routes, and enclosed car parks.

### Plus points

#### Bauder AOVs are:

- CE-certified, tested to EN 12101-2
- Glazed in glass, polycarbonate or a solid metal lid
- Available in thermally-broken insulated metal to achieve a U-value as low as 1.0 W/m<sup>2</sup>k
- Available in an uninsulated version suitable for unheated spaces, such as smoke shafts
- 140° opening
- Able to be powder-coated to any RAL colour





# Measuring Service

## It's all about understanding your needs

You can be sure that your requirements will be met using a product from our wide range of rooflights.

### Our service to you

In the case of a new build project, we can design rooflights to your precise specification or concept and suggest designs to match your requirements. If the specification is in its early stages, we can help to determine U-value requirements, ventilation levels, glazing specification, and other aspects to suit the needs of the space beneath. We also ensure the rooflights comply with current building regulations.

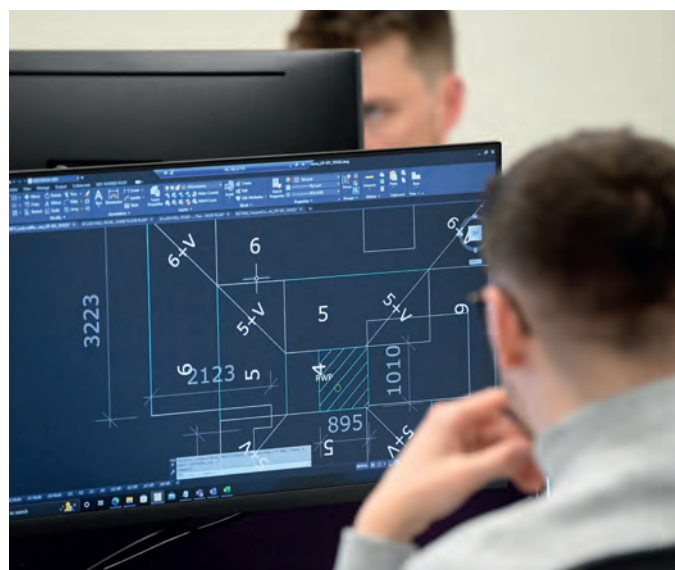
On refurbishment projects we can design units to replace those that currently exist, whilst ensuring that the new units comply with the latest building regulation requirements and health and safety standards. Our service includes a rooflight survey to ensure that new rooflights are manufactured to fit the existing roof openings with minimal disturbance on the inside. Attention is paid to the type and condition of the existing rooflight kerbs, and it will be clear in our subsequent specification exactly what is proposed so that the installing contractor knows what to allow for in their tender documents, and you know what to expect.

### Our installations

Bauder-approved contractors deliver the installation of our rooflights using trained operatives as part of the overall Bauder roofing system package. Specialist teams are employed when necessary to install more complicated designs to ensure a successful outcome.

### Our guarantee packages

Any rooflights that are supplied by Bauder as part of an overall roof system package will be guaranteed for the same duration as the Bauder waterproofing system. This gives you a sole point of contact in the unlikely event that any problems occur in connection with the roof over the forthcoming years. Sample guarantees are available upon request from [technical@bauder.co.uk](mailto:technical@bauder.co.uk) and are written in plain and easily understood language, clearly stating what is included, excluded and required to comply with the guarantee terms.



**UNITED KINGDOM**

Bauder Limited  
70 Landseer Road, Ipswich, Suffolk  
IP3 0DH, England  
**T:** +44 (0)1473 257671  
**E:** [info@bauder.co.uk](mailto:info@bauder.co.uk)  
**bauder.co.uk**

**IRELAND**

Bauder Limited  
O'Duffy Centre, Carrickmacross,  
Co. Monaghan, Ireland  
**T:** +353 (0)42 9692 333  
**E:** [info@bauder.ie](mailto:info@bauder.ie)  
**bauder.ie**

**Respecting the planet**

**Reducing use of materials**



This literature is only available as a digital brochure to reduce the use of paper. If you need to print it, please recycle at the end of purposeful use.